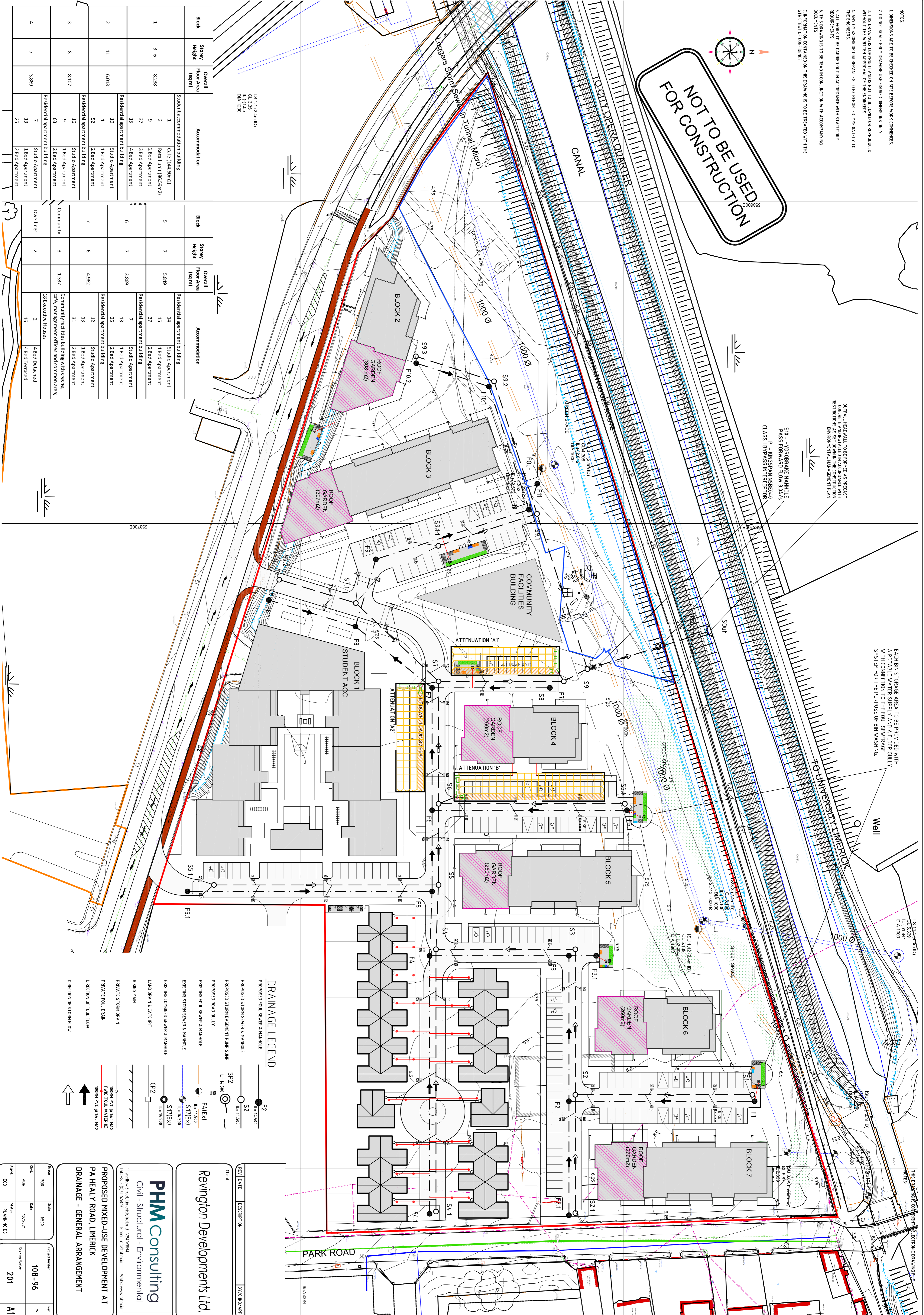


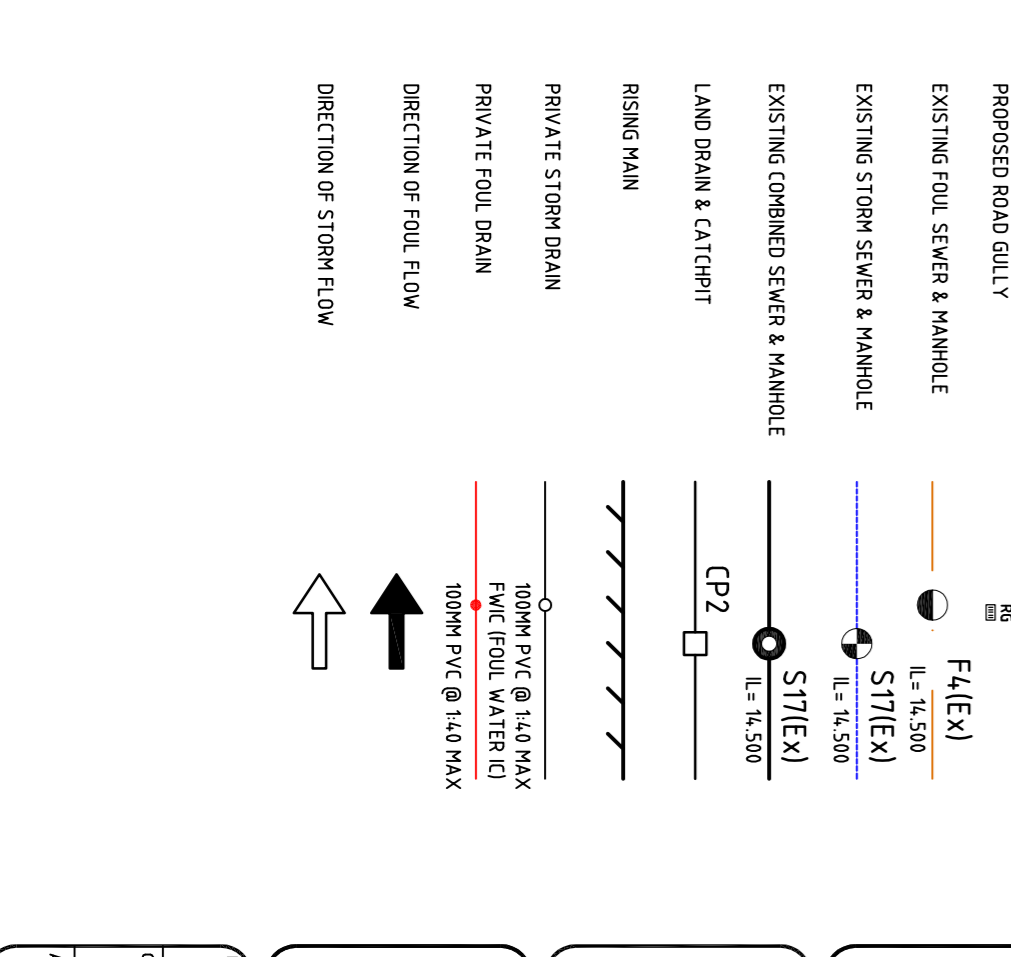
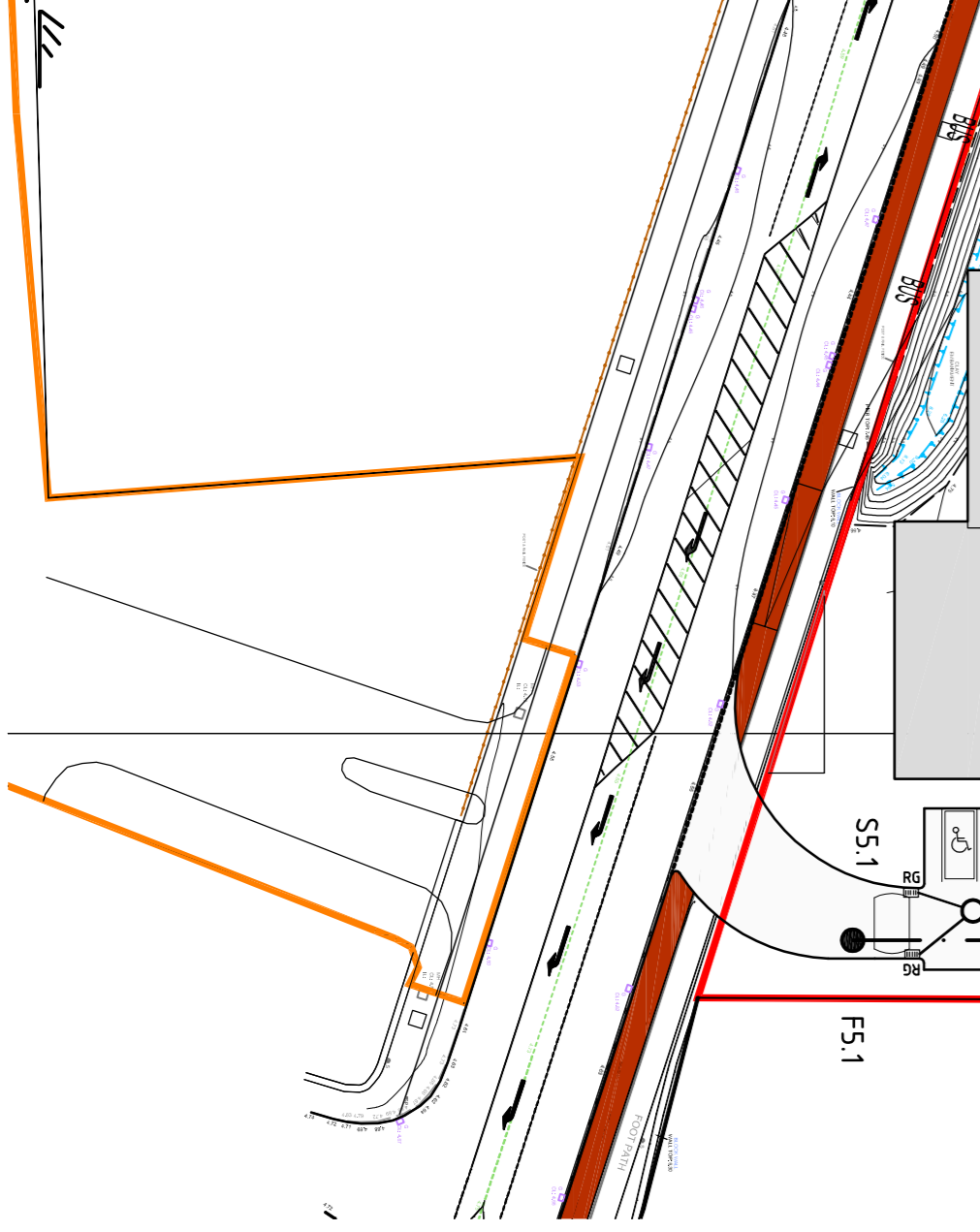
- NOTES
1. DIMENSIONS ARE TO BE CHECKED ON SITE BEFORE WORK COMMENCES.
 2. DO NOT SCALE FROM DRAWING. USE FIGURED DIMENSIONS ONLY.
 3. THIS DRAWING IS COPYRIGHT AND IS NOT TO BE COPIED OR REPRODUCED WITHOUT THE WRITTEN APPROVAL OF THE ENGINEERS.
 4. ANY OMISSIONS OR DISCREPANCIES TO BE REPORTED IMMEDIATELY TO THE ENGINEERS.
 5. ALL WORK TO BE CARRIED OUT IN ACCORDANCE WITH STATUTORY REQUIREMENTS.
 6. THIS DRAWING IS TO BE READ IN CONJUNCTION WITH ACCOMPANYING DOCUMENTS.
 7. INFORMATION CONTAINED ON THIS DRAWING IS TO BE TREATED WITH THE STRICTEST OF CONFIDENCE.

**NOT TO BE USED
FOR CONSTRUCTION**



Block	Storey Height	Overall Floor Area (sq m)	Accommodation
1	3-6	8,238	1 Cafe (144.6sqm) 3 Retail unit (86.59sqm) 9 2 Bed Apartment 37 3 Bed Apartment 15 4 Bed Apartment
2	11	6,013	10 Studio Apartment 1 1 Bed Apartment 52 2 Bed Apartment
3	8	8,107	16 Studio Apartment 9 1 Bed Apartment 63 2 Bed Apartment
4	7	3,869	7 Residential apartment building 13 Studio Apartment 25 2 Bed Apartment

Block	Storey Height	Overall Floor Area (sq m)	Accommodation
5	7	5,849	14 Studio Apartment 15 1 Bed Apartment 37 2 Bed Apartment
6	7	3,869	7 Studio Apartment 13 1 Bed Apartment 25 2 Bed Apartment
7	6	4,962	12 Studio Apartment 13 1 Bed Apartment 31 2 Bed Apartment
8	3	1,337	Community facilities building with cafe, management offices and common area, 18 Executive Houses 2 4 Bed Detached 16 4 Bed Terraced



PHM consulting
Civil - Structural - Environmental

11 Midway Street, Limerick, Ireland N94, W9X4
Tel: +353 (0)61 572620 Email: info@phm.ie Web: www.phm.ie

**PROPOSED MIXED-USE DEVELOPMENT AT
PA HEALY ROAD, LIMERICK
DRAINAGE - GENERAL ARRANGEMENT**

Client	Revington Developments Ltd.
REV DATE	DESCRIPTION
BY/CHKD/APP	

Project Number	108-96
Scale	1:500
Drawn	07/2021
Checked	
Approved	
Project Manager	201
Sheet	A1